

RUIJIE LASER

Shandong Ruijie CNC Technology Group Co., Ltd

📍 Dalu Sect, North of 308 National Highway Daqiao Town, Tianqiao Zone, Jinan City, China.

🌐 www.jnruijie.com

✉ info@jnruijie.com

☎ **+86-531-88697015**

Machine image for reference only, subject to real product.

STRENGTH WITNESS

OVER **400** EMPLOYEES

REGISTERED CAPITAL USD **\$15** MILLION

FACTORY AREA OVER **40000** SQUARE METERS

20 YEARS LASER CUTTING INDUSTRY ACCUMULATION

SALES TO MORE THAN **120** COUNTRIES WORLDWIDE

ESTABLISHING AGENCY BRANCHES IN MORE THAN **30** REGIONS

RUIJIE PROMOTES LASER INTELLIGENT MANUFACTURING



CULTURE

MOTIVATION MAKES FAR AHEAD ACTING AIMS HIGH BESIDE

- Enterprise Vision/ Leading the Intelligent Solution of Mechanical Manufacturing
- Enterprise Mission/ Become the Preferred Brand of Equipment Manufacturing Industry
- Enterprise Philosophy/ Customer Demand is Our Pursuit
- Enterprise Values/ Integrity & Responsibility, Professional & Efficient, Innovation & Enterprising, People Oriented.





ALL START WITH SERVICE

Ruijie Laser conducts several visits to all users every year, ready to provide technical support services at any moment, and provides relevant spare parts to customer for long period.

Upon receiving the user's repair call, the professional technician will be arranged to diagnose equipment fault within 8 hours, and come up with a solution to eliminate the fault.

If the fault cannot be diagnosed by telephone, the engineer will be arranged to go to the site for reason analysis, working out the plan for trouble elimination.

LEADING LASER
INTELLIGENT MANUFACTURING

HIGHER SPEED
MORE EFFICIENT

CAST ALUMINUM BEAM

Heavy steel casting, thin minimum wall thickness;
Effectively avoid casting defects, improve casting strength,
and good looking casting surface with light weight, the beam
with T6 treatment, guarantee the strength and toughness.



AVIATION ALUMINUM BEAM

Aviation aluminum material, molded by extrusion of high
pressure press machine;
T6 aging treatment;
Aluminum extrusion profiles developed for fiber cutting
machines with lightweight and high strength.

LEADING LASER
INTELLIGENT MANUFACTURING

MORE EFFICIENT
MORE STABLE
MORE ASEISMATIC



PLATE WELDING BED

High quality carbon structural steel integrally welded and formed with ribs inside, coming with good rigidity and high strength;
The bed is annealed for stress relief, 20 years without deformation;
Large-scale gantry milling one-stop machining to guarantee machining accuracy.

CASTING BED

Casted with high quality HT250 material, high compressive strength and hardness, great performance in shock absorption and wear resistance;
Cast iron is with low thermal sensitivity and guarantees dimensional stability;
Bed annealing treatment, 50 years without deformation.



Contents



P1 S MODEL PLATE FIBER LASER CUTTING MACHINE

P2 H MODEL PLATE FIBER LASER CUTTING MACHINE

P3 E MODEL WITH EXCHANGEABLE TABLE

P4 P MODEL WITH EXCHANGEABLE TABLE AND ENCLOSURE

P5 G MODEL FIBER LASER CUTTING MACHINE FOR LARGE POWER

P6 PT MODEL PLATE AND TUBE CUTTING MACHINE WITH ENCLOSURE

P7 PLATE AND TUBE INTEGRATED FIBER LASER CUTTING MACHINE

P8 TUBE FIBER LASER CUTTING MACHINE

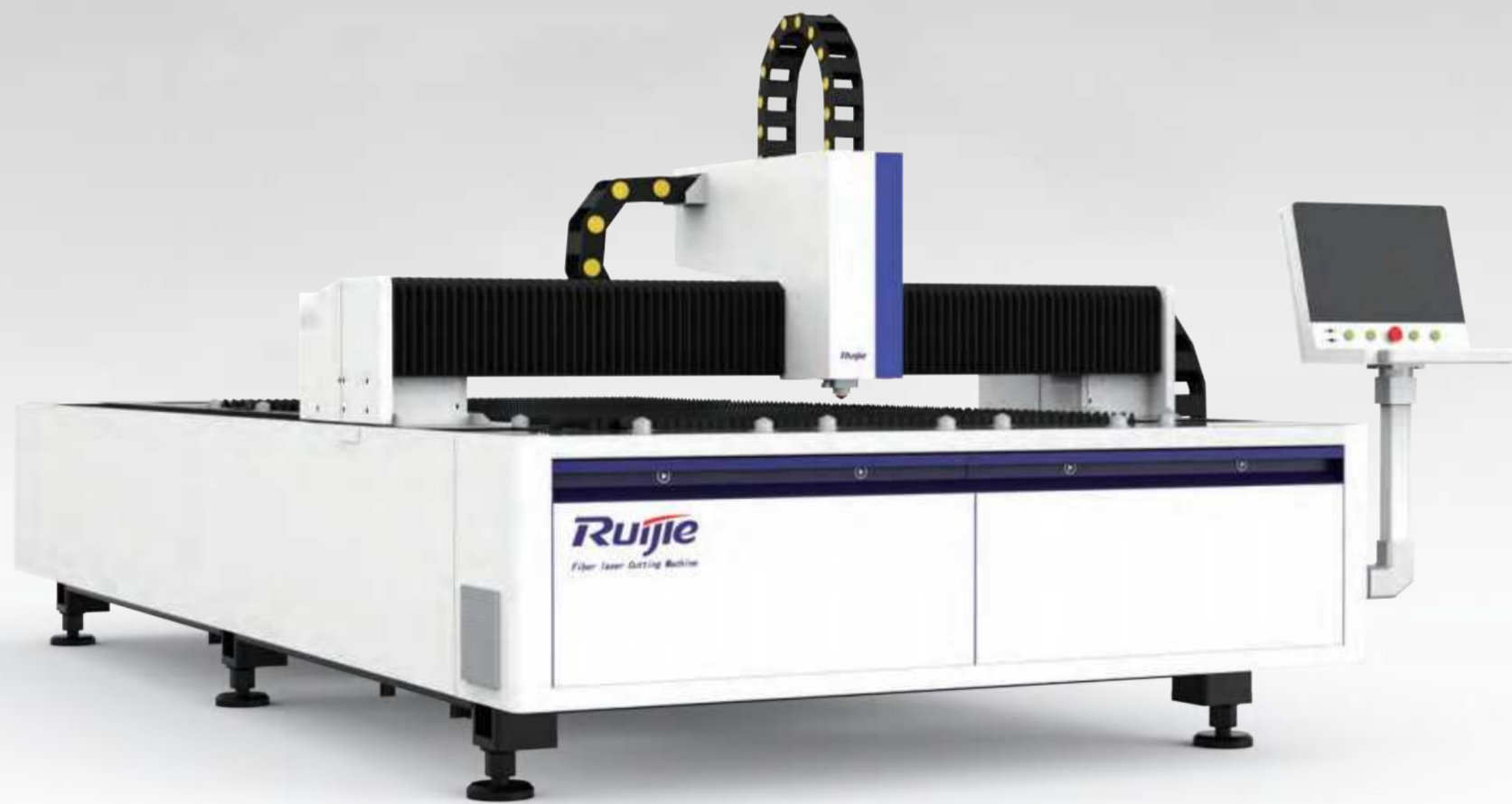
P9 TUBE FIBER LASER CUTTING MACHINE

P10 TUBE FIBER LASER CUTTING MACHINE WITH AUTO LOADING AND UNLOADING



S

S MODEL PLATE FIBER LASER CUTTING MACHINE



Technical Parameter

Machine Model	RJ-1309S	RJ-2513S	RJ-3015S	RJ-4015S
Working Area	1350X930mm	2550X1330mm	3050X1530mm	4050X1530mm
Laser Power	500-2000w			
Travel Speed	80m/min			
Positioning Accuracy	±0.03mm			
Repeat Positioning Accuracy	±0.02mm			
Max Acceleration	1.0G			

The working area and laser power can be customized per customer's need.

Product Features

Simple and generous appearance, integrated design.

Compact structure for easy delivery.

Highly cost-effective meeting the needs of most users.

Cutting Sample



H

H MODEL PLATE FIBER LASER CUTTING MACHINE



Technical Parameter

Machine Model	RJ-3015H	RJ-4020H	RJ-6020H	RJ-6025H	RJ-8025H
Working Area	3050X1530mm	4050X2030mm	6050X2030mm	6050X2530mm	8050X2530mm
Laser Power	2000-4000w				
Travel Speed	100m/min				
Positioning Accuracy	±0.03mm				
Repeat Positioning Accuracy	±0.02mm				
Max Acceleration	1.2G				

The working area and laser power can be customized per customer's need.

Product Features

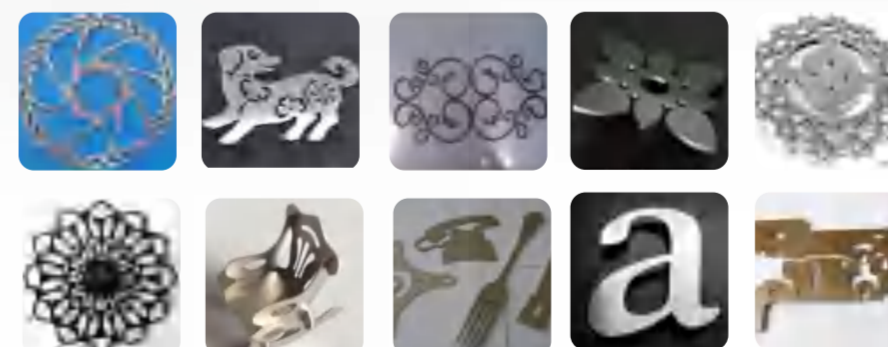
All use the most classic structural design, all components are well-known brands.

Low noise, stable performance.

Automatic lubrication of key components such as guide rails and racks to improve service life.

Using cast aluminum beam to improve the precision and reduce the weight.

Cutting Sample



E

E MODEL WITH EXCHANGEABLE TABLE



Technical Parameter

Machine Model	RJ-3015E	RJ-4020E	RJ-6020E	RJ-6025E	RJ-8025E
Working Area	3050X1530mm	4050X2030mm	6050X2030mm	6050X2530mm	8050X2530mm
Laser Power	2000-4000w				
Travel Speed	100m/min				
Positioning Accuracy	±0.03mm				
Repeat Positioning Accuracy	±0.02mm				
Max Acceleration	1.2G				

The working area and laser power can be customized per customer's need.

Product Features

All use the most classic structural design, all components are well-known brands.

Low noise, stable performance.

Automatic lubrication of key components such as guide rails and racks to improve service life.

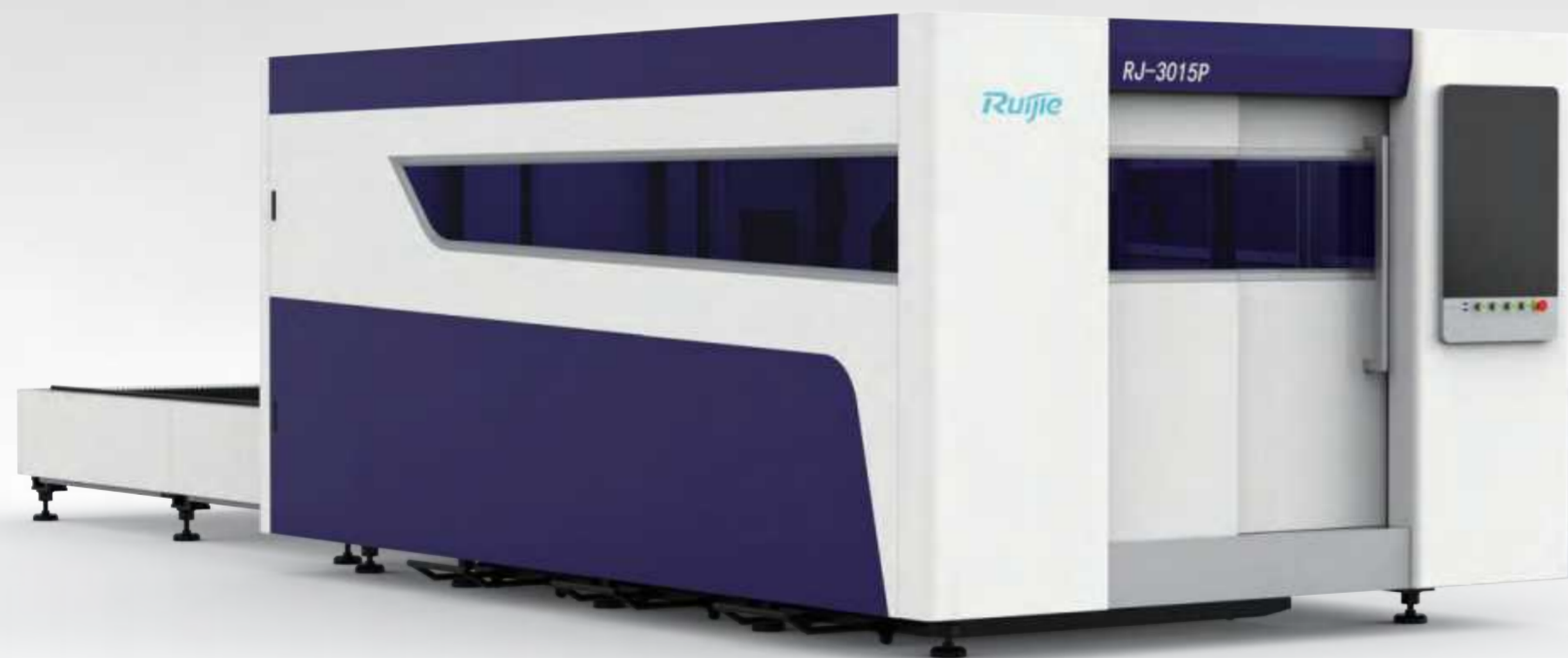
Using cast aluminum beam to improve the precision and reduce the weight.

Cutting Sample



P

P MODEL WITH EXCHANGEABLE TABLE AND ENCLOSURE



Technical Parameter

Machine Model	RJ-3015P	RJ-4020P	RJ-6020P	RJ-6025P	RJ-8025P
Working Area	3050X1530mm	4050X2030mm	6050X2030mm	6050X2530mm	8050X2530mm
Laser Power	2000-4000w				
Travel Speed	100m/min				
Positioning Accuracy	±0.03mm				
Repeat Positioning Accuracy	±0.02mm				
Max Acceleration	1.2G				

The working area and laser power can be customized per customer's need.

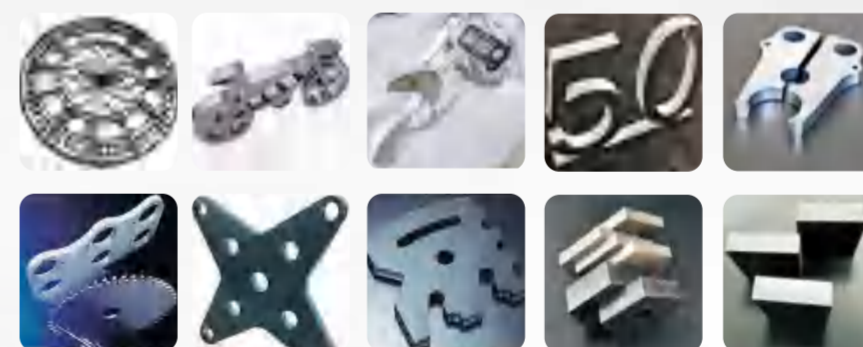
Product Features

Enclosure design, keeping safety and environmentally friendly.

Platform exchange takes only 10-15S saving time and improving work efficiency.

Equipped with two cameras, full monitoring.

Cutting Sample



G

G MODEL FIBER LASER CUTTING MACHINE FOR LARGE POWER



Technical Parameter

Machine Model	RJ-3015G	RJ-4020G	RJ-6020G	RJ-6025G	RJ-8025G
Working Area	3050X1530mm	4050X2030mm	6050X2030mm	6050X2530mm	8050X2530mm
Laser Power	6000-12000w				
Travel Speed	140m/min				
Positioning Accuracy	±0.03mm				
Repeat Positioning Accuracy	±0.02mm				
Max Acceleration	1.5G				

The working area and laser power can be customized per customer's need.

Product Features

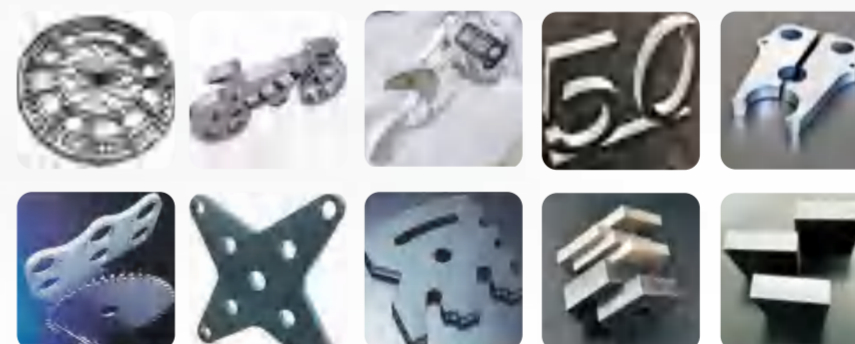
Enclosure design, fume exhausting in double ways, keeping safety and environmentally friendly.

Platform exchange takes only 10-15S saving time and improving work efficiency.

Equipped with two cameras, full monitoring.

Especially designed for large laser power, fast cutting speed, anti-fire, highest accuracy.

Cutting Sample



PT

PT MODEL PLATE AND TUBE CUTTING MACHINE WITH ENCLOSURE



Technical Parameter

Machine Model	RJ-3015PT
Working Area	1530X3050mm
Laser Power	2000-4000w
Travel Speed	90m/min
Positioning Accuracy	±0.03mm
Repeat Positioning Accuracy	±0.02mm
Max Acceleration	1.0G

The working area and laser power can be customized per customer's need.

Product Features

Enclosure design, Safe and environmentally friendly.

Double platform exchange only takes 10-15S to save loading and unloading and improve work efficiency.

Equipped with two cameras, full monitoring.

Two functions of Tube and Plate cutting by one machine.

Cutting Sample



HT

PLATE AND TUBE INTEGRATED FIBER LASER CUTTING MACHINE



Technical Parameter

Machine Model	RJ-3015HT
Working Area	1530X3050mm
Laser Power	2000-4000w
Travel Speed	90m/min
Positioning Accuracy	±0.03mm
Repeat Positioning Accuracy	±0.02mm
Max Acceleration	1.0G

The working area and laser power can be customized per customer's need.

Product Features

All components are well-known brands.

Low noise, stable performance.

Two functions of Tube and Plate cutting can be done by one machine.

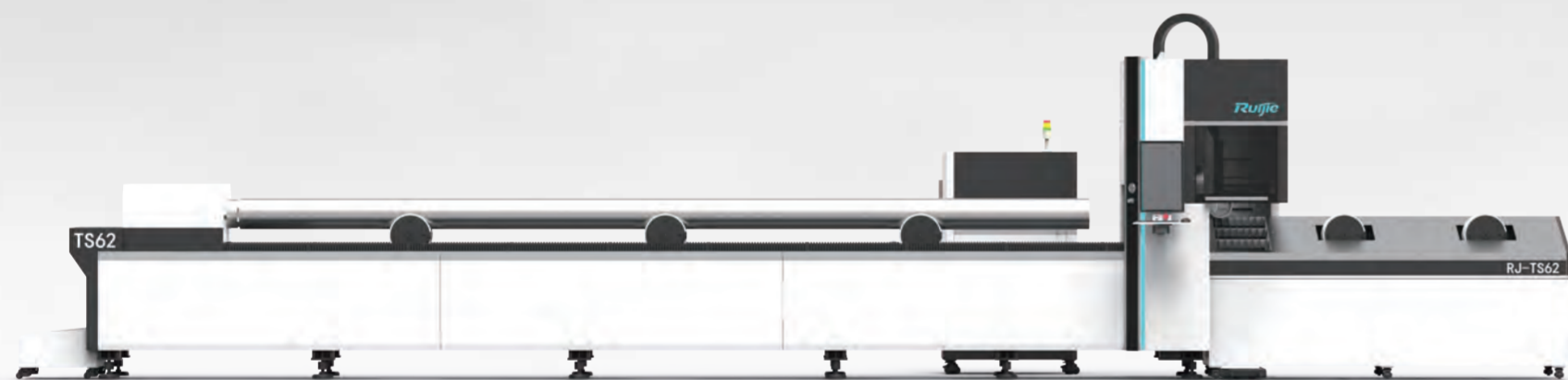
Able to cut different pipes such as square, round, rectangular and other pipes, diameter from 15-215mm.

Cutting Sample



TS

TUBE FIBER LASER CUTTING MACHINE



Technical Parameter

Machine Model	RJ-TS62
Working Area	6000xφ220
Laser Power	1000-4000w
Travel Speed	80m/min
Positioning Accuracy	±0.03mm
Repeat Positioning Accuracy	±0.02mm
Max Acceleration	1.0G

The working area and laser power can be customized per customer's need.

Product Features

Automatic double motion chucks, full clamping without manually adjusting the claws.

Free to cut square pipe, round pipe, rectangular and other pipes.

Easy to operate, quick to cut.

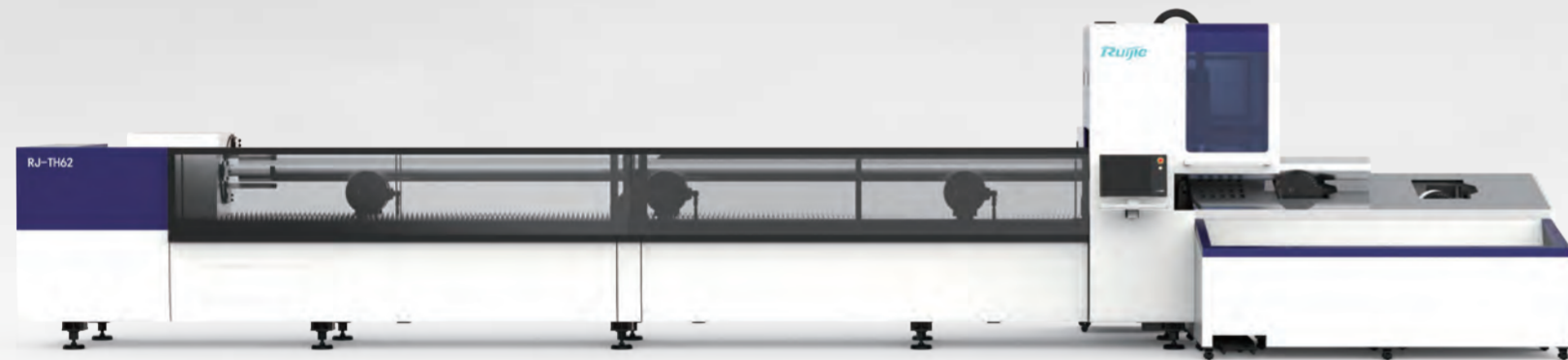
Holding pipe diameter $\Phi 15-215\text{mm}$.

Cutting Sample



TH

TUBE FIBER LASER CUTTING MACHINE



Technical Parameter

Machine Model	RJ-TH62
Working Area	6000xφ220
Laser Power	1000-4000w
Travel Speed	80m/min
Positioning Accuracy	±0.03mm
Repeat Positioning Accuracy	±0.02mm
Max Acceleration	1.0G

The working area and laser power can be customized per customer's need.

Product Features

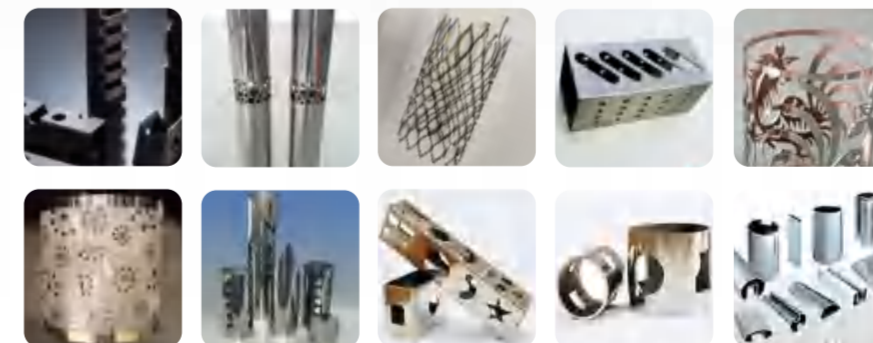
Automatic double motion chucks, full clamping without manually adjusting the claws.

Free to cut square pipe, round pipe, rectangular and other pipes.

Easy to operate, quick to cut.

Holding pipe diameter $\Phi 15-215\text{mm}$.

Cutting Sample



TA

TUBE FIBER LASER CUTTING MACHINE WITH AUTO LOADING AND UNLOADING



Technical Parameter

Machine Model	RJ-TA62
Working Area	6000xφ220
Laser Power	1000-4000w
Travel Speed	80m/min
Positioning Accuracy	±0.03mm
Repeat Positioning Accuracy	±0.02mm
Max Acceleration	1.0G

The working area and laser power can be customized per customer's need.

Product Features

Automatic double motion chucks, full clamping without manually adjusting the claws.

Free to cut square pipe, round pipe, rectangular and other pipes.

Easy to operate, quick to cut.

Holding pipe diameter $\Phi 15-215\text{mm}$.

Cutting Sample



Exhibitions



Presentation of Exhibitions

AVERAGE SIGNING RATE OVER 20%.

CO-CREATE BETTER FUTURE

IPG
PHOTONICS

Raycus

SMC

YASKAWA

HIWIN
Motion Control and System Technology

柏楚电子
Frilendess Co.,Ltd.

Rexroth
Bosch Group

BECKHOFF

YYC


nLIGHT

Life Is On | Schneider
Electric

PRECITEC

QUALITY FIRST

Ruijie has always been adhering to the philosophy of "Quality First", exploring the new concept area of fiber laser cutting machine, and has been reaching long-term strategic cooperation with IPG, Raycus, YASKAWA, YYC brands etc. With cutting-edge technology, Ruijie has always lead the laser machine industry, and equipped high-tech products all over the world. To fulfill the diversity of equipment, meet the requirements of customization, Ruijie is using high quality and stability hardware. Ruijie communicates regularly with domestic and foreign partners, offering new strategy and goal for achieving intelligentization of Ruijie products.



**AN ENTERPRISE
DEDICATED TO RESEARCH,
DEVELOPMENT AND CONTINUOUS
INNOVATION.**

Customer Witness
Witnessed by more than 5,000 customers globally.